



DAS

DIGITAL AGRICULTURE SERVICES

1. Who is DAS?
2. Live Demo of the DAS Rural Intelligence Platform™
3. Graincast 2019 Results
4. Graincast 2020 Plan plus some new science to monitor productivity...every 7 days!
5. Engagement Models

Disclaimer: This document is not for public distribution and has been furnished to you solely for your information and must not be reproduced or redistributed to any other person.

This material is for the personal information of the authorized recipient and Digital Agriculture Services Pty Ltd. (DAS) is not soliciting any action based upon it. This report is not to be construed as an offer to sell or solicitation of an offer to buy any commodity or commodity derivative to any person in any jurisdiction where such an offer or solicitation would be illegal. It is for the general information of clients of DAS. It doesn't constitute a personal recommendation or take into account the particular investment objectives, financial situations, or needs of individual clients.

In so far as this report includes current or historical information, it is believed to be reliable though its accuracy or completeness cannot be guaranteed. Neither DAS, nor any person connected with it, accepts any liability arising from the use of this document. The recipients of this material should rely on their own due diligence and receive their own professional advice.

Price and value of the commodity referred to in this material may go up or down. Past performance is not a guide for future performance. Certain transactions including those involving commodity derivatives involve substantial risk and are not suitable for everyone. The report is based on information from different sources, some proprietary and some public. Opinions expressed are DAS's current opinions as of the date appearing on this material only. While we endeavour to update on a reasonable basis the information discussed in this material, there may be regulatory, compliance, or other reasons that prevent us from doing so. Readers of this report are cautioned that any forward-looking statements are not predictions and may be subject to change without notice. Our proprietary trading may make trading decisions that are inconsistent with the recommendations expressed herein.

We and our affiliates, officers, directors, and employees worldwide may: (a) from time to time, have long or short positions in, and buy or sell the commodities mentioned herein or (b) be engaged in any other transaction involving such commodities for compensation or have other potential conflict of interest with respect to any recommendation and related information and opinions. No part of this material may be duplicated in any form and/or redistributed without DAS's prior written consent.

A perfect storm is unfolding thanks to rural data that is just not good enough.



CHALLENGE 1
Feeding a growing population



CHALLENGE 2
Providing a livelihood for farmers



CHALLENGE 3
Protecting the Environment

\$5 Trillion

A top global industry that is also known as the world's least digitised



Our vision is to create the
world's leading rural
intelligence company

...starting in Australia

DAS

DIGITAL
AGRICULTURE
SERVICES

Dedicated Software-as-a-Service (SaaS) and data products

SaaS

Farmer Insight Hub

Rural Property Hub

Rural Valuations Hub



Climate Risk Hub



Commodity Hub



Rural Insurance Hub



DATA PRODUCTS

Rural AVM

CropID



Farm Productivity



Yield Forecasting



Yield Monitoring



Paddock Boundaries



Pre-Planning Predictions



Current Product



In Development



Future Product



Global

Industry Need | The key questions



What is the likely planted area for the coming year?



How is the growing season progressing and how does it compare to previous years?



Has extreme heats impacted flowering?



Who has been impacted by frost?



How is growing season rainfall impacting yields?



What has been the impact on yields of climate? Hail? Severe storms?



What is likely yield at paddock, farm, region, state and continental scale?

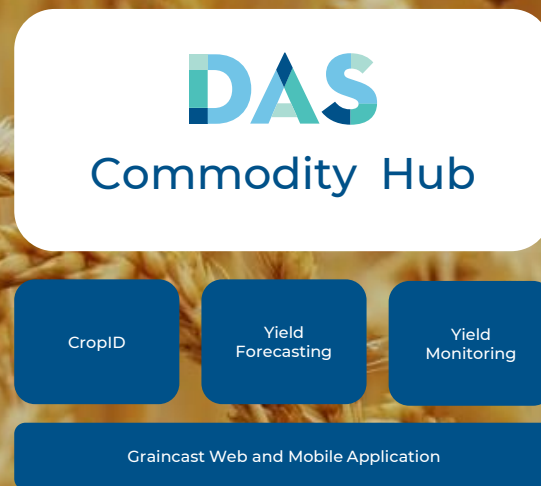


What farms and region are suffering drought?

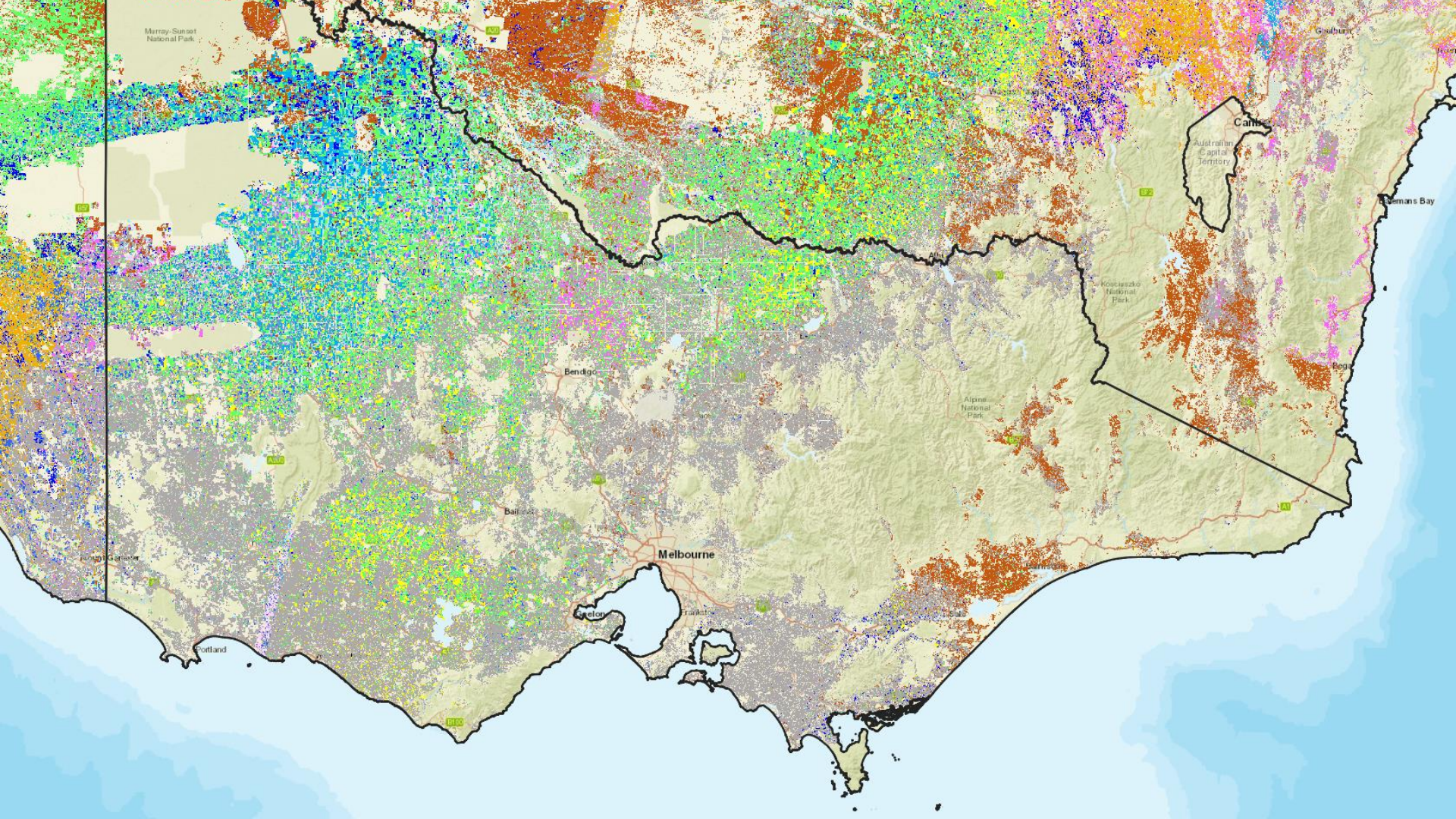


What is the likely demand for fertiliser during the year?

In 2019 DAS and CSIRO integrated unique IP and technology¹ that enables the precise, accurate and rapid identification of crop type and prediction of yield at a farm, regional and national scale



Combining this with the DAS Rural Intelligence Platform, further CSIRO research and investments in advanced analytics we are targeting the release of DAS Commodity Hub focussed on pulses and grains²



In 2019 we used field surveys and AI to create crop maps & yield predictions for the Australian Winter 2019 cropping season – 30 plus crops including wheat from barley

Classifying crops at farm, regional & national scale – In 2019 we covered...

50,000+

Paddocks

60,000+

Kms travelled

15

PhDs/Teams on the road

DAS
Commodity Hub

Over the last 3 years the precision and accuracy has improved substantially against available benchmarks¹

Crop Area (CropID)

Year	Canola	Wheat	Barley	Wheat & Barley & Cereal (unspecified) as Wheat
2019	130.13%	104.32%	98.06%	102.57%
2018	98.72%	110.15%	79.33%	101.79% ⁵
2017	110.59%	93.16%	216.98%	76.46% ⁶

Crop Yield (C-Crop)

Year	Canola	Wheat	Barley	Wheat & Barley & Cereal (unspecified) as Wheat ²
2019	123.88%	101.93%	88.28%	97.38%
2018	114.88%	116.17%	75.70%	103.86% ***
2017	94.58%	49.9% ³	175.6% ⁴	89.89% ****

Notes:

Note 1: We have benchmarked against official ABARES.

Note 2: Cereal (unspecified) is a classification used only in 2017

Note 3: Wheat yield figure assumes that all "cereal unspecified" areas are wheat

Note 4: Barley yield figure assumes none of the "cereal unspecified" areas are barley

Note 5: Figure taken by summing yields for wheat and barley and comparing to summed ABARES yields. This is done due to the level of model confusion between barley and wheat. However, as historical barley and wheat yields differ by 20% on average within a single state and growing season, this approach is prone to errors.

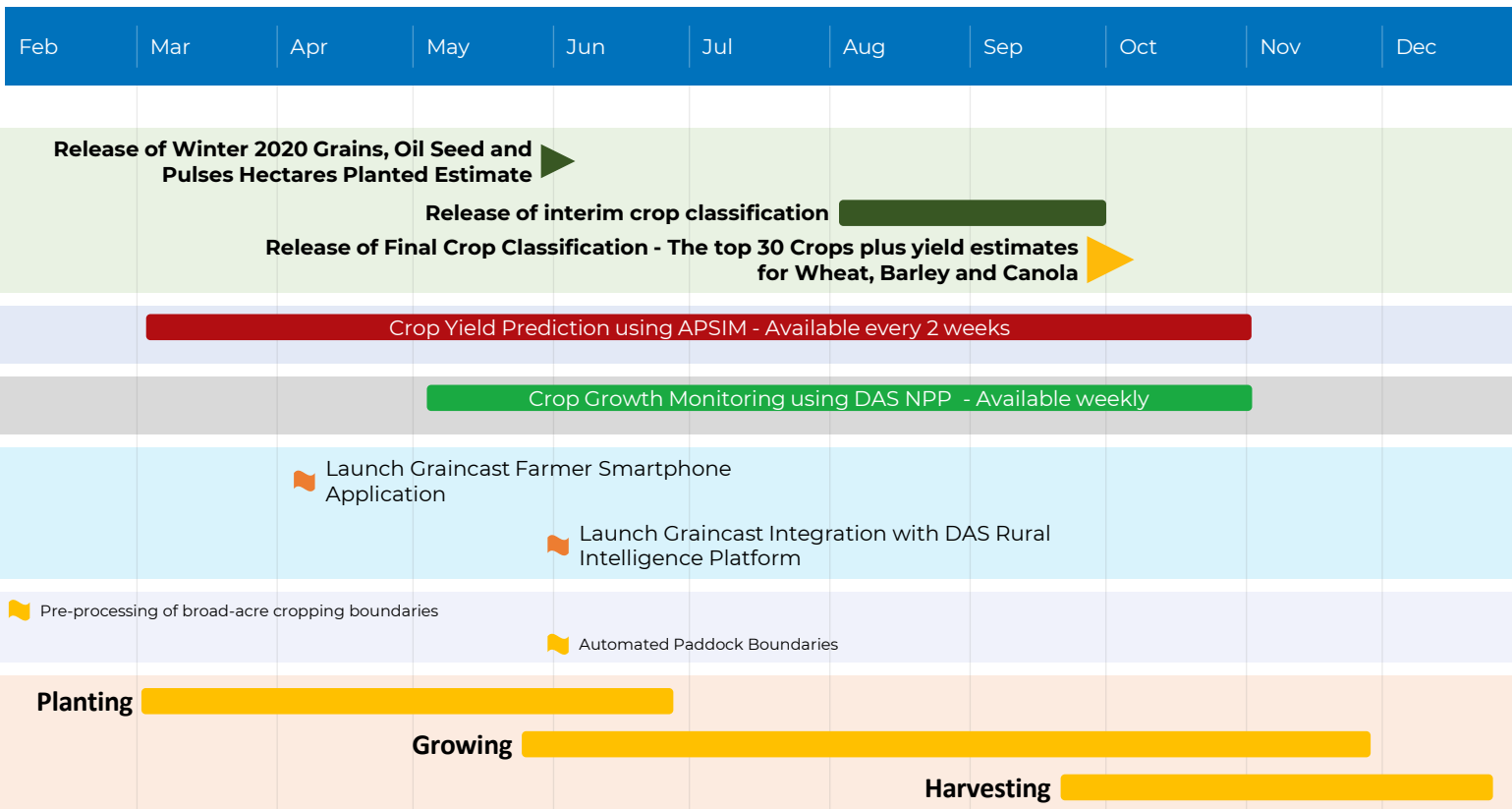
Note 6: Same approach used as above, with "cereal unspecified" areas included as wheat.



VISIT
DIGITALAGRICULTURESERVICES.COM
or
<https://map.digiag.io/>

GRAINCAST | Winter 2020 Plan

Over 2020 we will be launching the DAS Commodity Hub and making this available to commercial clients



Industry Need | The key questions



What is the likely planted area for the coming year?



How is the growing season progressing and how does it compare to previous years?



Has extreme heats impacted flowering?



Who has been impacted by frost?



How is growing season rainfall impacting yields?



What has been the impact on yields of climate? Hail? Severe storms?



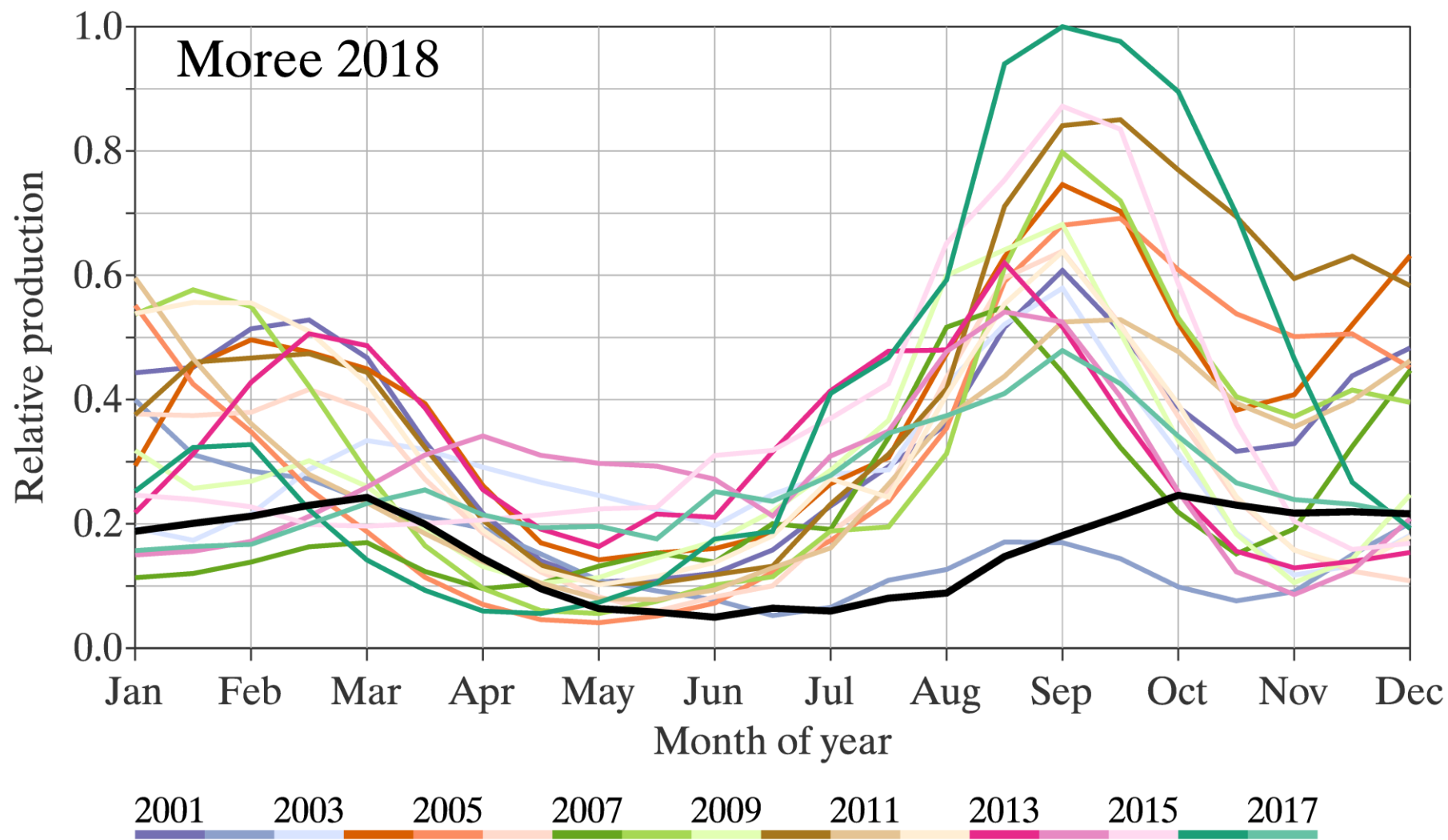
What is likely yield at paddock, farm, region, state and continental scale?

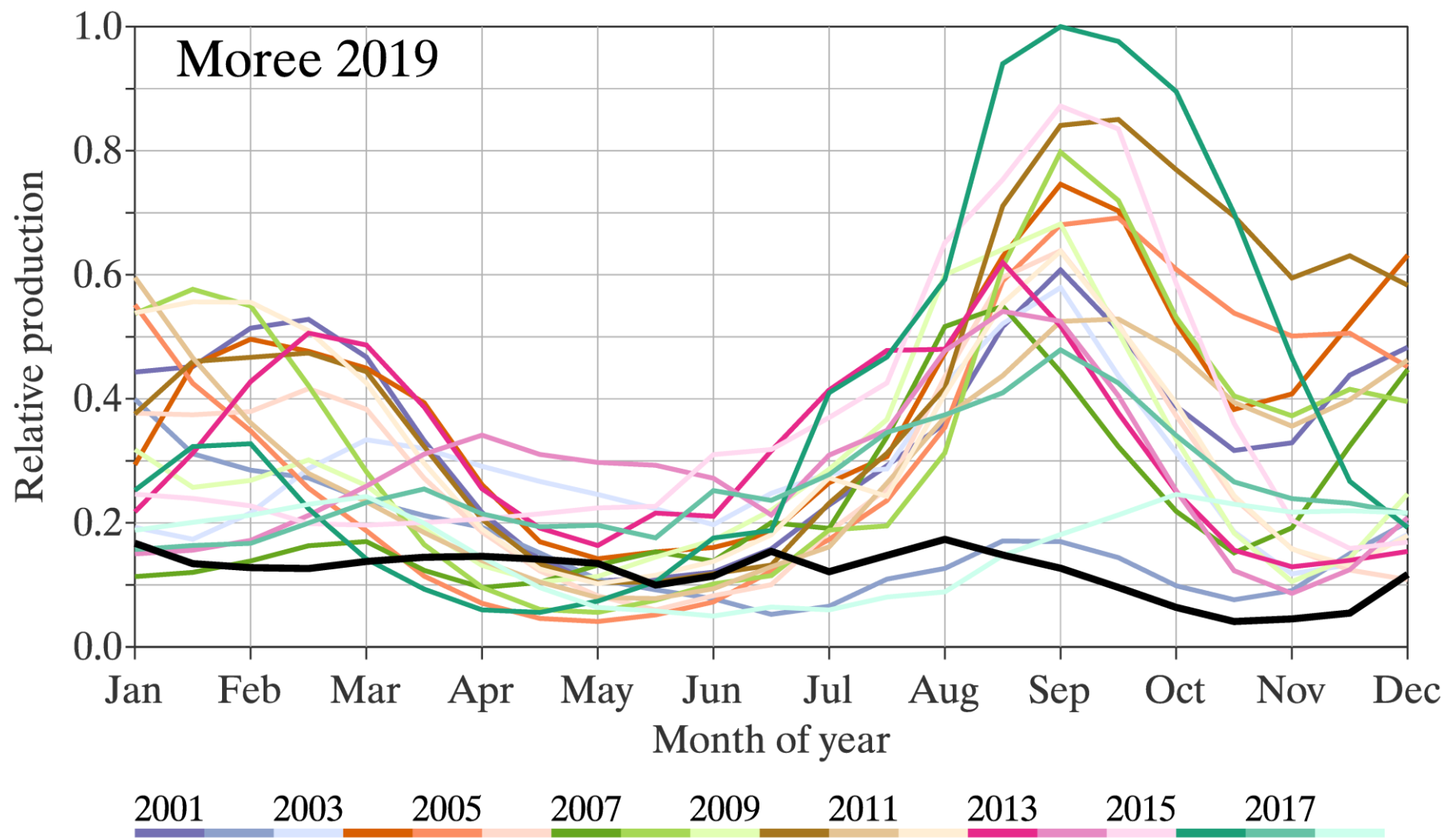


What farms and region are suffering drought?



What is the likely demand for fertiliser during the year?





Australia

Winter Crop Area

19.1 M ha

Based on 2019/20

Winter Crop Production

33,866 kt

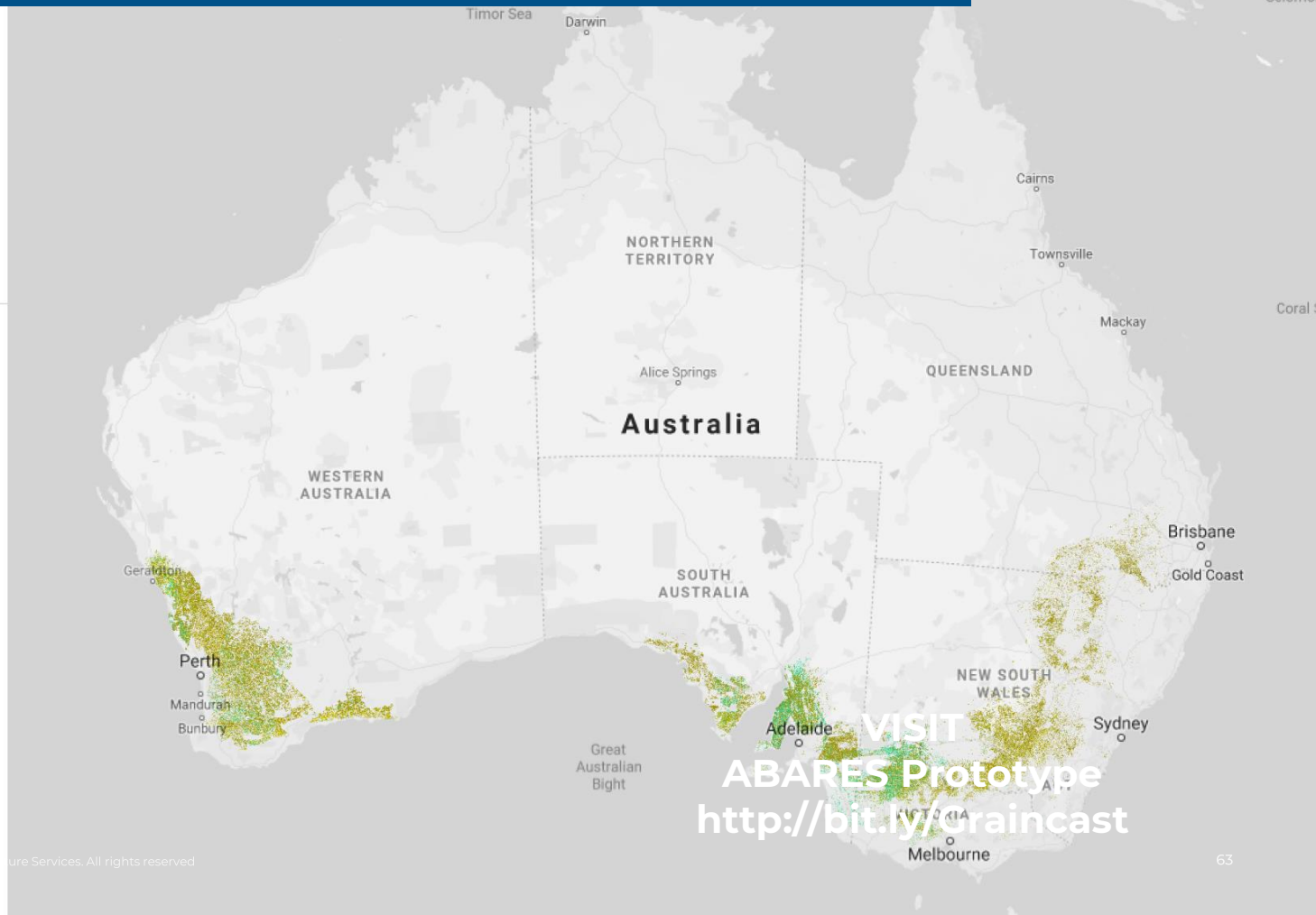
Based on 2019/20 (Wheat, Canolla, Barley)

Yield

Cereal	17,584,000 ha
Oilseed	2,559,000 ha
Pulse	1,687,00 ha

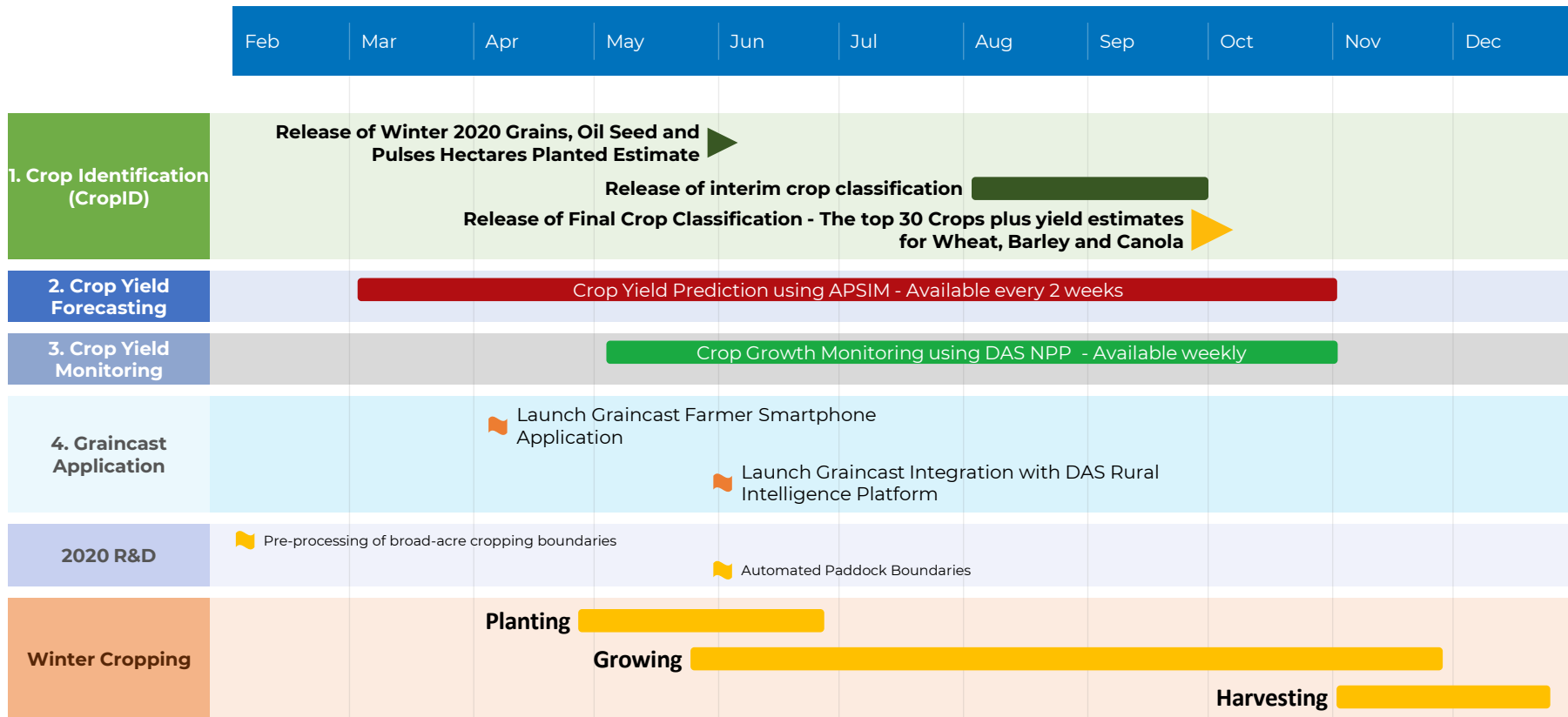
[View Yield Confidence Score](#) >

Prototype | DAS Rural Commodity Hub



GRAINCAST | Winter 2020 Plan

Over 2020 we will be launching the DAS Commodity Hub and making this available to commercial clients





**Delivering rural
intelligence for
a better world**

Anthony Willmott

anthonyw@dasintel.io

+61 400 687 750

David Roberts

davidr@dasintel.io

+61 409 501 226

Jonathon Clark

jonathonc@dasintel.io

+61 408 799 560