

Grains Industry Association of Victoria

Post Harvest Meeting

18 February 2022

Chris O'Rourke
Grower Services Manager



GrainCorp Receivals: 2021/22

- GrainCorp Eastern Seaboard intake: 13.2 million tonnes
- GrainCorp Victorian region intake: 3.85 million tonnes
- Nth NSW and Sth NSW regions both received between 3.75-3.85 million tonnes.
- Queensland received 1.7 million tonnes



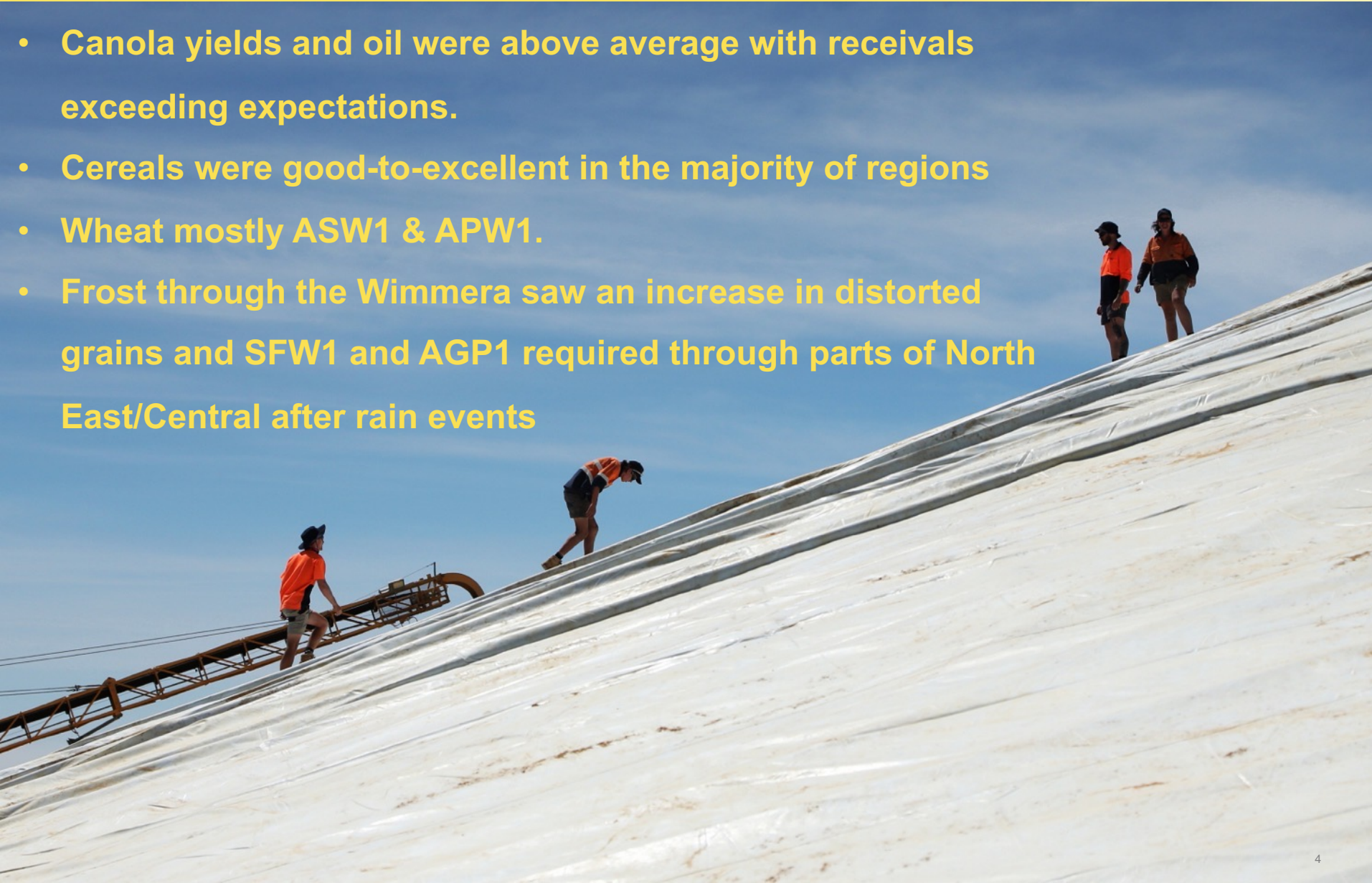
Victorian Receivals: 2020/21

- Berrybank, Deniliquin, Dunolly, Elmore, Mitiamo, Muchison East, Naracoorte, Numurkah, Oaklands and Yarrawonga all received record receivals.
- Oaklands and Tocumwal (NSW) and Murtoa each received over 200,000mt
- Largest receival day ~150,000mt across all commodities
- Canola receivals the standout with all clusters exceeding their forecasts



Victoria: Quality and Yields

- Canola yields and oil were above average with receivals exceeding expectations.
- Cereals were good-to-excellent in the majority of regions
- Wheat mostly ASW1 & APW1.
- Frost through the Wimmera saw an increase in distorted grains and SFW1 and AGP1 required through parts of North East/Central after rain events



Markets

- Export demand strong through Vic Ports for all commodities
- Malt Barley and Canola flowing into non traditional homes.

Questions

